

forge with redfig

Accelerate your digital transformation with **SAP Business Technology Platform**

Our *forge* offering combines expertise, methodology, frameworks, and pre-packaged technology to assist throughout every stage of your digital journey:

1

Discover and Prepare: Explore opportunities to unlock value and understand how SAP BTP can address those business challenges

- Conduct business analysis of existing pain points and uncover high-value use cases
- Facilitate design thinking workshops to pinpoint optimal high-level designs
- Assess feasibility and priority of identified use cases to maximize ROI
- Provide guidance on system sizing and licensing to optimize value



2

Decide and Plan: Transform ideas into actionable plans and a strategic roadmap

- Finalize innovation roadmap based on use case priorities and organizational goals
- Develop user-centric prototype to gather early feedback and increase stakeholder buy-in
- Finalize blueprint and architecture to ensure alignment with business objectives
- Establish development frameworks and standards



3

Build and Deploy: Accelerate development and launch resilient solutions with immediate impact.

- Streamline initial system setup based on best practices
- Perform agile solution development
- Leverage pre-packaged templates and frameworks to expedite development and ensure consistency
- Shepherd the solution through testing, cutover and deployment to maximize go-live success



4

Run and Innovate: Ensure ongoing success and innovation by proactively managing operations and leveraging the platform for continuous improvement.

- Monitor applications and optimize performance
- Establish mechanisms for quick defect identification and resolution
- Automate testing to facilitate release schedules and ensure quality
- Provide expedient and high-quality support



Keeping the Core clean

forge with Redfig embraces the clean core concept to achieve cloud compliant solutions

Cloud Innovation Layer

SAP BTP

Consistent development with modern standards

Data is relevant, complete, correct and cleansed

Leverage released APIs for integration

No duplication of standard functionality

Clean Core

SAP S/4HANA ECC

Software stack on latest version.

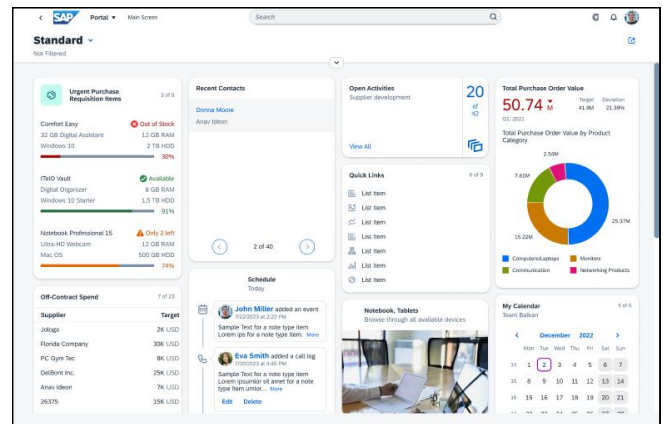
Extensions adhere to best practices

With our *forge* offering, we guide you seamlessly from ideation to implementation, guaranteeing that your investment in the SAP Business Technology Platform flourishes with successful outcomes. Backed by a diverse background spanning various industries along with deep SAP functional and technical expertise, our team crafts comprehensive solutions tailored precisely to meet your business challenges.

FEATURED USE CASES

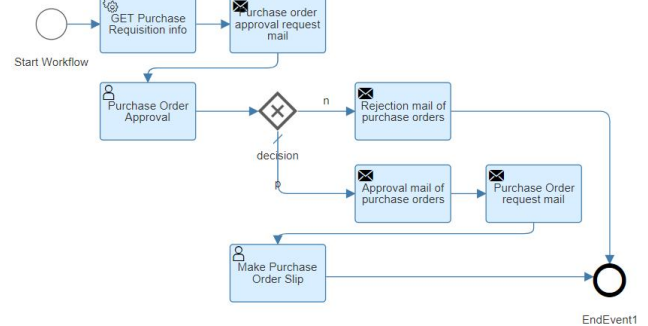
PORTALS

- **Accessibility** – Any device, anywhere, with no VPN or software installs required. Galvanize your users with an intuitive, modern interface.
- **SAP Integration** – Expose SAP data and processes in real-time. No clunky middleware, no troubleshooting integration errors.
- **Security** – Expose the right data to the right people.
- **Personalization** – Your URL, your logo, your design theme. Make this portal a natural extension of your brand.
- **Agility** – Scale as needed, quickly add new functionality or third-party services to keep up with your growing business needs.



WORKFLOWS

- **Simplification** – Remove process bottlenecks and streamline user interactions for improved efficiency.
- **Customization** – Customizable workflows to simplify any business process
- **Validation** – Input validation for decreased error occurrences
- **Visibility** – Notification and monitoring in every flow step
- **User-friendly** – Simplified, mobile-ready user interfaces



ABOUT US

Since 2019, Redfig has provided Software Solutions and Services to organizations that are looking to get the best value out of their SAP investment. We have a passion for harnessing *technology* to empower *people* and improve *processes*, leading to successful business outcomes. With offices in Chicago, USA and Barcelona, Spain, our team is ready to assist customer of any size or geographic presence.

Get in touch!

Matias Sapatta - *forge* Engagement Manager
matias.sapatta@redfigllc.com

